



Alina Mardesich

Senior Vice President

Office: 310.867.2931

Mobile: 310.480.4198

Email: amardesich@gspartners.com

DRE License: 01844092



\$20,000,000

Co-Op

Revolving Credit Facility
New York, NY



\$9,400,000

Parking Structure

Bridge
Los Angeles, CA



\$4,235,000

Mixed-Use

Acquisition/Bridge
Santa Barbara, CA



\$5,900,000

Office

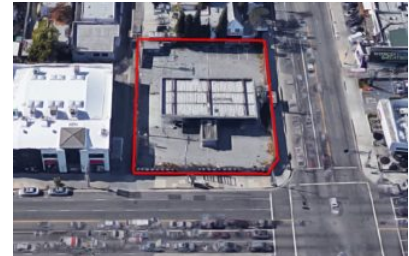
Refinance
Pasadena, CA



\$18,032,000

Office

Bridge/Acquisition
Orange County, CA



\$3,500,000

Land

Bridge
Los Angeles, CA



\$10,900,000

Multifamily

Acquisition
Los Angeles, CA