



GEORGE SMITH PARTNERS

REAL ESTATE CAPITAL ADVISORS

WWW.GSPARTNERS.COM



Alina Mardesich

Senior Director

Office: 310.867.2931

Mobile: 310.480.4198

Email: amardesich@gspartners.com

DRE License: 01844092



\$8,700,000

17-unit/44-Bed Co-Living Community

Cash-Out Refinance
San Francisco, CA



\$4,500,000

Land

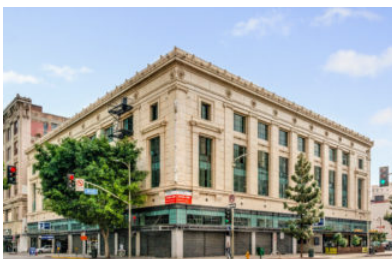
Acquisition
Laveen, AZ



\$20,000,000

Co-Op

Revolving Credit Facility
New York, NY



\$9,400,000

Parking Structure

Bridge
Los Angeles, CA



\$5,900,000

Office

Refinance
Pasadena, CA



\$18,032,000

Office

Bridge/Acquisition
Orange County, CA



\$10,900,000

Multifamily

Acquisition
Los Angeles, CA



\$4,200,000

Multifamily

Construction
Los Angeles, CA



\$6,700,000

Multifamily

Debt/Equity
San Diego, CA